

Operating Theatre Prefabricated Concept

The WTK Operating Theatres are designed to conform to the Health Service standard HTM03-01 / HTM2025. This standard is adopted by many health authorities around the world. WTK OT design prefabricated concept has eased the transportation, installation, testing & commissioning of the modern operating theatres. It is a design & build feature that has large number of technical expertise and know-how.



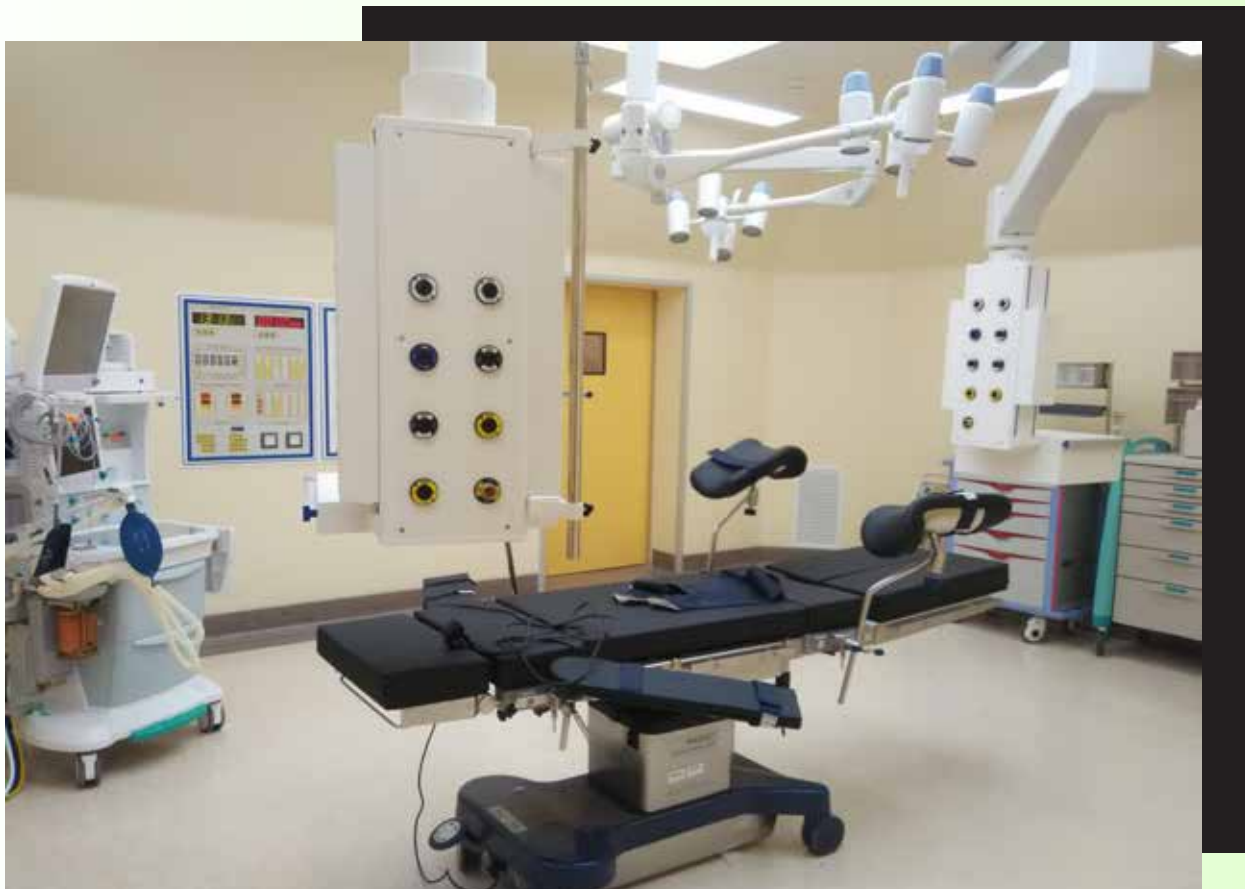
Various Color Schemes

The WTK operating theatre has been designed & build to suit many modern equipment as: -

- | | |
|---------------------------|-------------------------|
| 1. Air / Light Ceiling | 8. Pendants |
| 2. OT door | 9. OT Control Panel |
| 3. Electrical equipment | 10. OT Table |
| 4. Pressure relief damper | 11. OT Light |
| 5. Air Handling Unit | 12. Surgical Scrub Sink |
| 6. Lighting System | 13. Storage system |
| 7. Digital OR System | |

Description

With the stand-alone steel support system or wall-mounted system, WTK OT has been built to suit many modern hospital applications. The wall panel is using first class electrolysed steel with non-joint finish after installation.



All the sharp edges and corners has been radius to avoid bacteria contamination and better flow air / light system in the theatre.

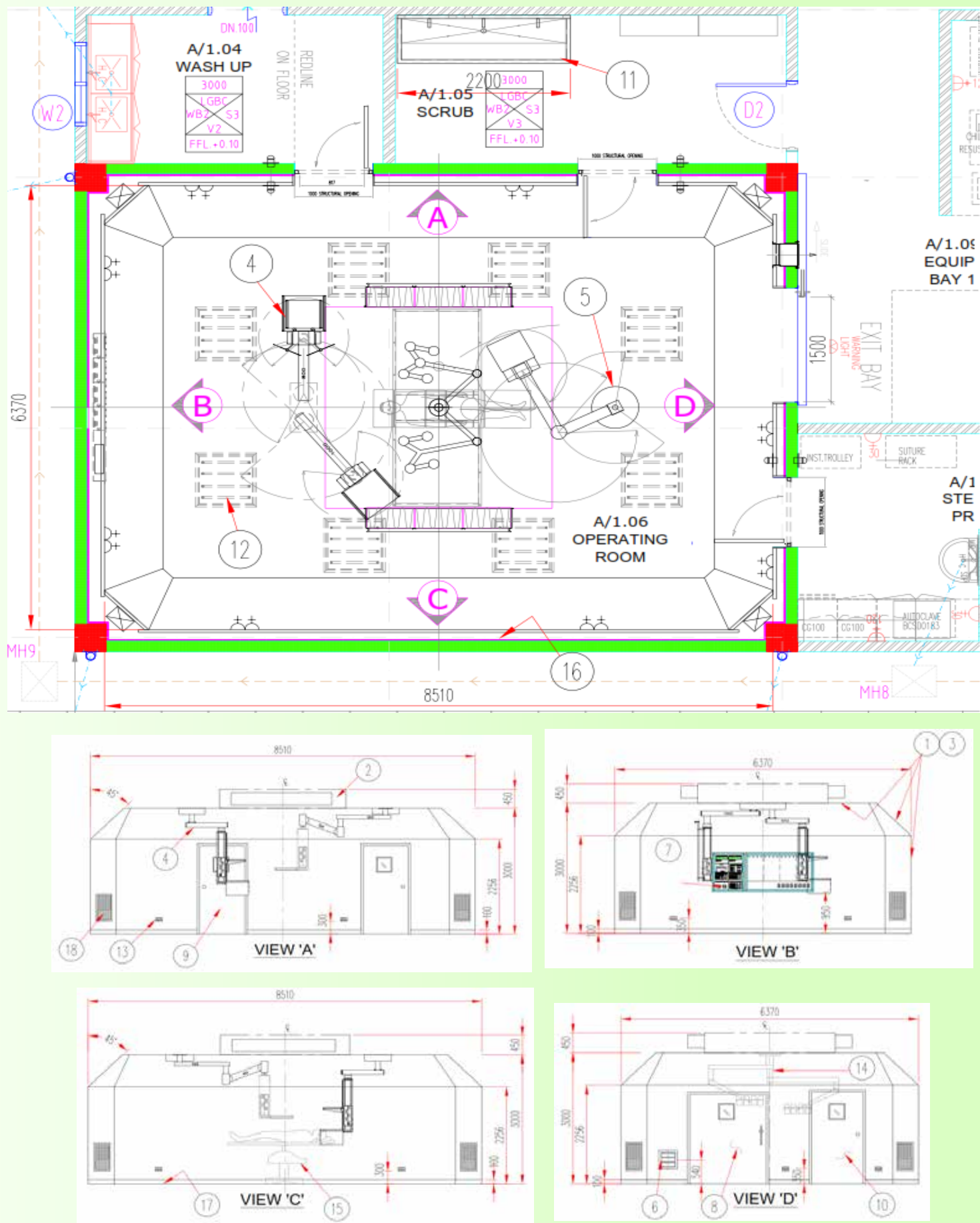
The sterilisable coating finishes along with antistatic flooring system have the advantages over the other modern OT concept.



Full Fledged OT Design

Innovative Design in Medical Engineering

TYPICAL LAYOUT OF PREFABRICATED OPERATION THEATRE



TECHNICAL SPECIFICATION

HTM 03-01/HTM2025 - Ventilation in Healthcare Premises
DIN 4799 - Testing of Air Distribution Systems Serving OT
HTM 2007 - Electrical Supply and Services Distribution
HTM 2020/2021 - Electrical Safety codes for High & Low Voltage

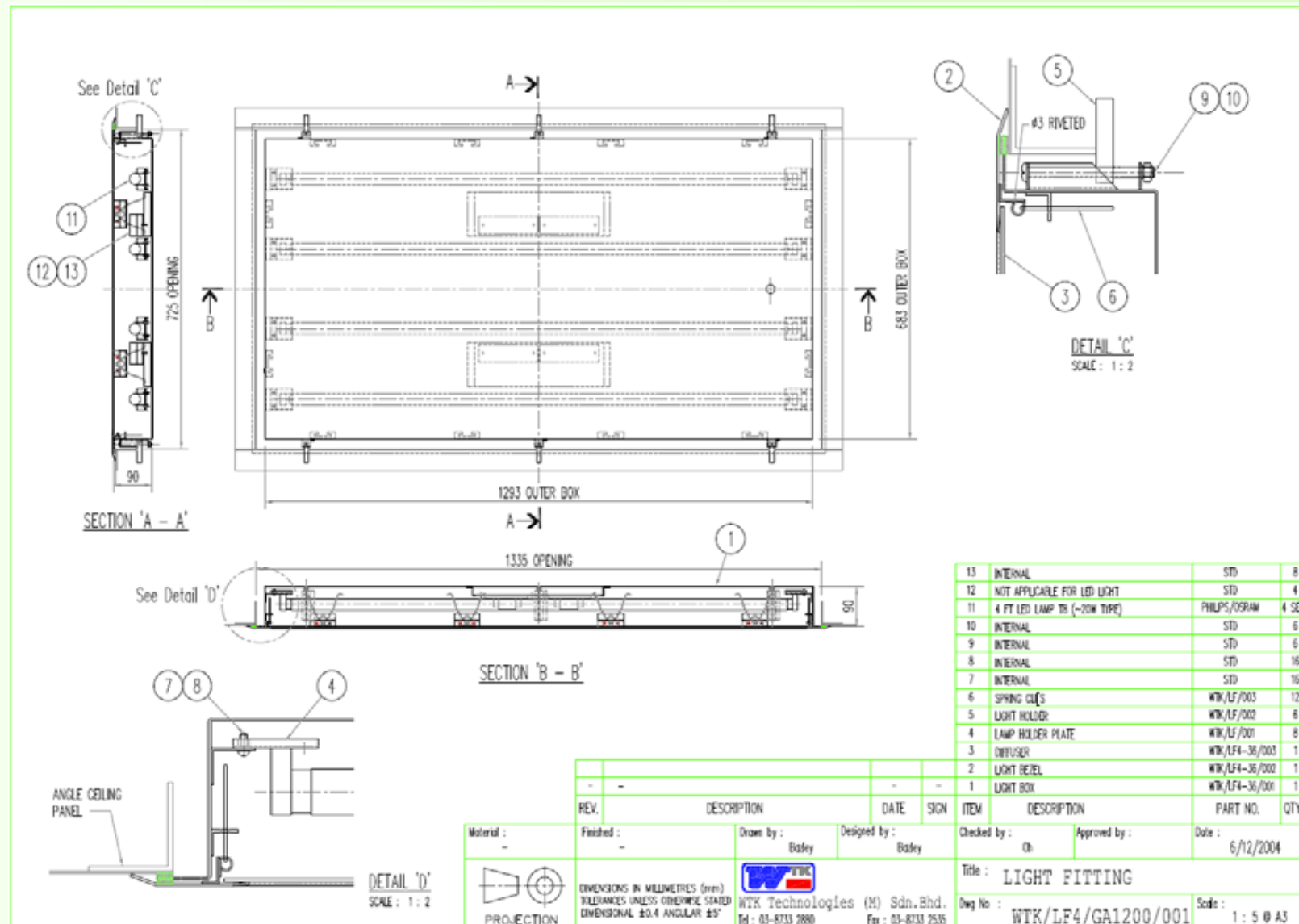
- Designation : WT14000 Prefabricated Operating Theatre
Dimension : Varies
Material : Electrogalvanized Steel with sterile coatings
Finishing : Color scheme to BS4800 (* subject to availability)
Mounting : Wall Mounted or Self-Supported Free Standing System
Wall Thk. : Panel 40 mm with structural frame
Power Rating : 240VAC input, 50/60 Hz

MODEL NUMBER

- WT14001 Wall Mounted Design
- WT14002 Free Standing Design
- WT14003 Back to Back Design (space saving)
- WT14004 Radiation Protection Barium Plaster/Lead Lined
- WT14005 Other Design Concept



TYPICAL LAYOUT OF OT LED LIGHT FITTINGS



TECHNICAL SPECIFICATION

HTM 03-01/HTM2025 – Ventilation in Healthcare Premises

DIN 4799 – Testing of Air Distribution Systems Serving OT

HTM 2007 – Electrical Supply and Services Distribution

HTM 2020/2021 – Electrical Safety codes for High & Low Voltage

Designation : WT14000LF OT LED Light Fittings

Dimension : 2 x 2 ft, 2 x 4 ft type

Material : Electrogalvanized Steel bezel & box with acrylic sheet

Finishing : White Epoxy coatings

Mounting : Ceiling Mounted with smart clamp

Wall Thk. : 1.5/1.6mm thickness

Power Rating : 240VAC input, 50/60 Hz sealing

Power Rating : 240VAC input, 50/60 Hz

MODEL NUMBER

WT14000LF1 2 X 2 ft with 2 LED lamp

WT14000LF2 2 X 2 ft with 4 LED lamp

WT14000LF3 2 X 4 ft with 2 LED lamp

WT14000LF4 2 X 4 ft with 4 LED lamp

WT14000LF0 Other Design Concept

